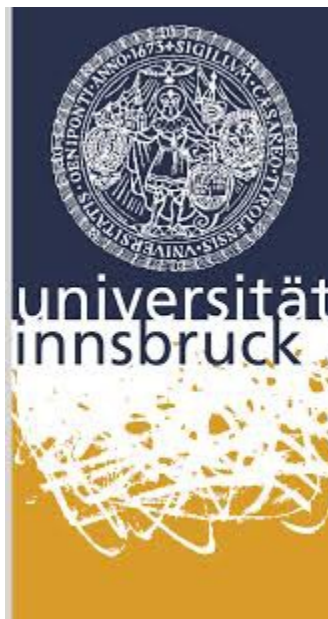




Lifelong
Learning Programme



Metalinguistic Awareness Tests
in European Languages



Metalinguistic Awareness Tests in European Languages (MATEL)

Project number 543277-LLP-1-2013-1-IT-KA2-KA2MP

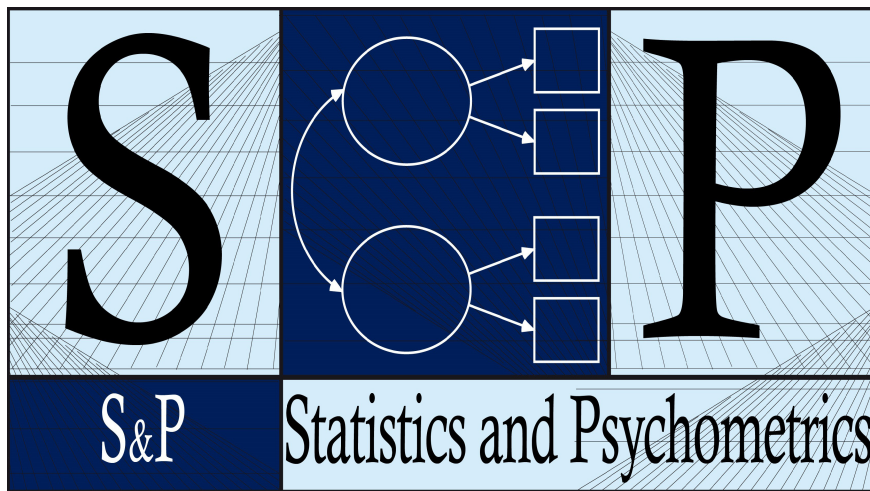
Co-funded by the Lifelong Learning Programme of the European Union

The European Commission support for the production of this publication does not constitute an endorsement of the contents which reflects the views only of the authors, and the Commission cannot be held responsible for any use which may be made of the information contained therein

STATISTICAL PROCESSING ON THE MKT-2'S PILOT STUDY

DATA ANALYSES

PERFORMED BY
GABRIELLA CANDILERA
AND
PAOLO ILICETO



S&P Statistics and Psychometrics s.r.l.

CONTENTS

Introduction	p. 4
Descriptive statistics	p. 5
Levels	p. 36
Reliability	p. 41
Intercorrelations	p. 49
Factor structure	p. 53

Introduction

These results, obtained from 17 subjects, are preliminary to a solid validation process, but they are anyway very interesting, evidencing the accuracy of the translation and of the administration.

- Descriptive statistics show a normal distribution.
- Levels of responses in the ML scores (0, 1, 2), respectively, follow the expected patterns, based on the original Italian version.
- Reliability coefficients ranged from more than 600 (662) to more than 800 (811) in ML scores, therefore, they span from high to very high.
- Factor analysis has revealed a major component that matches the ML dimension.

Descriptives Statistics

Descriptives

Descriptive Statistics

	N	Minimum	Maximum	Mean	Std. Deviation
	Statistic	Statistic	Statistic	Statistic	Statistic
Synonymy L	17	3	5	4,06	,659
Synonymy ML	17	0	10	4,76	2,818
Acceptability L	17	20	28	23,71	2,664
Acceptability ML	17	4	21	14,41	5,100
Ambiguity L	17	5	7	6,71	,686
Ambiguity ML	17	2	13	8,76	2,884
Function L	17	5	6	5,88	,332
Function ML	17	3	21	11,59	5,112
Tham-2 total L	17	36	45	40,35	2,936
Tham-2 total ML	17	12	60	39,53	13,191
Tham-2 total score	17	52	101	79,88	13,624
Valid N (listwise)	17				

Descriptive Statistics

	Skewness		Kurtosis	
	Statistic	Std. Error	Statistic	Std. Error
Synonymy L	-,057	,550	-,314	1,063
Synonymy ML	-,222	,550	-,475	1,063
Acceptability L	,336	,550	-,869	1,063
Acceptability ML	-,534	,550	-,434	1,063
Ambiguity L	-2,177	,550	3,453	1,063
Ambiguity ML	-,744	,550	,431	1,063
Function L	-2,610	,550	5,440	1,063
Function ML	,233	,550	-,812	1,063
Tham-2 total L	-,142	,550	-1,214	1,063
Tham-2 total ML	-,651	,550	-,104	1,063
Tham-2 total score	-,594	,550	-,136	1,063

Frequencies

Statistics

		Synonymy L	Synonymy ML	Acceptability L	Acceptability ML	Ambiguity L
N	Valid	17	17	17	17	17
	Missing	0	0	0	0	0
Percentiles	25	4,00	3,00	21,50	11,50	7,00
	50	4,00	5,00	24,00	15,00	7,00
	75	4,50	7,00	25,00	19,00	7,00

Statistics

		Ambiguity ML	Function L	Function ML	Tham-2 total L
N	Valid	17	17	17	17
	Missing	0	0	0	0
Percentiles	25	7,50	6,00	7,50	37,00
	50	9,00	6,00	10,00	41,00
	75	11,00	6,00	16,00	42,50

Statistics

		Tham-2 total ML	Tham-2 total score
N	Valid	17	17
	Missing	0	0
Percentiles	25	31,50	69,50
	50	43,00	83,00
	75	49,50	89,00

Frequency Table

Synonymy L

		Frequency	Percent	Valid Percent	Cumulative Percent
Valid	3	3	17,6	17,6	17,6
	4	10	58,8	58,8	76,5
	5	4	23,5	23,5	100,0
	Total	17	100,0	100,0	

Synonymy ML

		Frequency	Percent	Valid Percent	Cumulative Percent
Valid	0	2	11,8	11,8	11,8
	1	1	5,9	5,9	17,6
	3	3	17,6	17,6	35,3
	4	1	5,9	5,9	41,2
	5	2	11,8	11,8	52,9
	6	3	17,6	17,6	70,6
	7	3	17,6	17,6	88,2
	8	1	5,9	5,9	94,1
	10	1	5,9	5,9	100,0
	Total	17	100,0	100,0	

Acceptability L

		Frequency	Percent	Valid Percent	Cumulative Percent
Valid	20	2	11,8	11,8	11,8
	21	2	11,8	11,8	23,5
	22	3	17,6	17,6	41,2
	23	1	5,9	5,9	47,1
	24	2	11,8	11,8	58,8
	25	4	23,5	23,5	82,4
	28	3	17,6	17,6	100,0
	Total	17	100,0	100,0	

Acceptability ML

		Frequency	Percent	Valid Percent	Cumulative Percent
Valid	4	1	5,9	5,9	5,9
	7	2	11,8	11,8	17,6
	11	1	5,9	5,9	23,5
	12	1	5,9	5,9	29,4
	13	2	11,8	11,8	41,2
	14	1	5,9	5,9	47,1
	15	2	11,8	11,8	58,8
	17	2	11,8	11,8	70,6
	18	1	5,9	5,9	76,5
	20	2	11,8	11,8	88,2
	21	2	11,8	11,8	100,0
	Total	17	100,0	100,0	

Ambiguity L

		Frequency	Percent	Valid Percent	Cumulative Percent
Valid	5	2	11,8	11,8	11,8
	6	1	5,9	5,9	17,6
	7	14	82,4	82,4	100,0
	Total	17	100,0	100,0	

Ambiguity ML

		Frequency	Percent	Valid Percent	Cumulative Percent
Valid	2	1	5,9	5,9	5,9
	5	2	11,8	11,8	17,6
	7	1	5,9	5,9	23,5
	8	4	23,5	23,5	47,1
	9	1	5,9	5,9	52,9
	10	3	17,6	17,6	70,6
	11	2	11,8	11,8	82,4
	12	2	11,8	11,8	94,1
	13	1	5,9	5,9	100,0
	Total	17	100,0	100,0	

Function L

		Frequency	Percent	Valid Percent	Cumulative Percent
Valid	5	2	11,8	11,8	11,8
	6	15	88,2	88,2	100,0
	Total	17	100,0	100,0	

Function ML

		Frequency	Percent	Valid Percent	Cumulative Percent
Valid	3	1	5,9	5,9	5,9
	5	1	5,9	5,9	11,8
	7	2	11,8	11,8	23,5
	8	1	5,9	5,9	29,4
	9	2	11,8	11,8	41,2
	10	2	11,8	11,8	52,9
	12	1	5,9	5,9	58,8
	13	1	5,9	5,9	64,7
	15	2	11,8	11,8	76,5
	17	2	11,8	11,8	88,2
	19	1	5,9	5,9	94,1
	21	1	5,9	5,9	100,0
	Total	17	100,0	100,0	

Tham-2 total L

		Frequency	Percent	Valid Percent	Cumulative Percent
Valid	36	2	11,8	11,8	11,8
	37	3	17,6	17,6	29,4
	39	1	5,9	5,9	35,3
	40	2	11,8	11,8	47,1
	41	2	11,8	11,8	58,8
	42	3	17,6	17,6	76,5
	43	1	5,9	5,9	82,4
	44	2	11,8	11,8	94,1
	45	1	5,9	5,9	100,0
	Total	17	100,0	100,0	

Tham-2 total ML

		Frequency	Percent	Valid Percent	Cumulative Percent
Valid	12	1	5,9	5,9	5,9
	16	1	5,9	5,9	11,8
	27	1	5,9	5,9	17,6
	30	1	5,9	5,9	23,5
	33	2	11,8	11,8	35,3
	36	1	5,9	5,9	41,2
	38	1	5,9	5,9	47,1
	43	1	5,9	5,9	52,9
	45	1	5,9	5,9	58,8
	47	1	5,9	5,9	64,7
	49	2	11,8	11,8	76,5
	50	2	11,8	11,8	88,2
	54	1	5,9	5,9	94,1
	60	1	5,9	5,9	100,0
	Total	17	100,0	100,0	

Tham-2 total score

		Frequency	Percent	Valid Percent	Cumulative Percent
Valid	52	1	5,9	5,9	5,9
	56	1	5,9	5,9	11,8
	66	1	5,9	5,9	17,6
	69	1	5,9	5,9	23,5
	70	1	5,9	5,9	29,4
	76	1	5,9	5,9	35,3
	78	1	5,9	5,9	41,2
	82	1	5,9	5,9	47,1
	83	1	5,9	5,9	52,9
	85	1	5,9	5,9	58,8
	86	1	5,9	5,9	64,7
	87	1	5,9	5,9	70,6
	88	1	5,9	5,9	76,5
	90	1	5,9	5,9	82,4
	91	1	5,9	5,9	88,2
	98	1	5,9	5,9	94,1
	101	1	5,9	5,9	100,0
	Total	17	100,0	100,0	

Frequency Table

syn1

		Frequency	Percent	Valid Percent	Cumulative Percent
Valid	0	3	17,6	17,6	17,6
	1	14	82,4	82,4	100,0
	Total	17	100,0	100,0	

syn2

		Frequency	Percent	Valid Percent	Cumulative Percent
Valid	0	1	5,9	5,9	5,9
	1	16	94,1	94,1	100,0
	Total	17	100,0	100,0	

syn3

		Frequency	Percent	Valid Percent	Cumulative Percent
Valid	0	3	17,6	17,6	17,6
	1	14	82,4	82,4	100,0
	Total	17	100,0	100,0	

synl4

		Frequency	Percent	Valid Percent	Cumulative Percent
Valid	0	8	47,1	47,1	47,1
	1	9	52,9	52,9	100,0
	Total	17	100,0	100,0	

synl5

		Frequency	Percent	Valid Percent	Cumulative Percent
Valid	0	1	5,9	5,9	5,9
	1	16	94,1	94,1	100,0
	Total	17	100,0	100,0	

synml1

		Frequency	Percent	Valid Percent	Cumulative Percent
Valid	0	5	29,4	29,4	29,4
	1	4	23,5	23,5	52,9
	2	8	47,1	47,1	100,0
	Total	17	100,0	100,0	

synml2

		Frequency	Percent	Valid Percent	Cumulative Percent
Valid	0	4	23,5	23,5	23,5
	1	9	52,9	52,9	76,5
	2	4	23,5	23,5	100,0
	Total	17	100,0	100,0	

synml3

		Frequency	Percent	Valid Percent	Cumulative Percent
Valid	0	4	23,5	23,5	23,5
	1	11	64,7	64,7	88,2
	2	2	11,8	11,8	100,0
	Total	17	100,0	100,0	

synml4

		Frequency	Percent	Valid Percent	Cumulative Percent
Valid	0	10	58,8	58,8	58,8
	1	3	17,6	17,6	76,5
	2	4	23,5	23,5	100,0
	Total	17	100,0	100,0	

synml5

		Frequency	Percent	Valid Percent	Cumulative Percent
Valid	0	4	23,5	23,5	23,5
	1	8	47,1	47,1	70,6
	2	5	29,4	29,4	100,0
	Total	17	100,0	100,0	

accl1

		Frequency	Percent	Valid Percent	Cumulative Percent
Valid	1	17	100,0	100,0	100,0

accl2

		Frequency	Percent	Valid Percent	Cumulative Percent
Valid	1	17	100,0	100,0	100,0

accl3

		Frequency	Percent	Valid Percent	Cumulative Percent
Valid	1	17	100,0	100,0	100,0

accl4

		Frequency	Percent	Valid Percent	Cumulative Percent
Valid	0	2	11,8	11,8	11,8
	1	15	88,2	88,2	100,0
	Total	17	100,0	100,0	

accl5

	Frequency	Percent	Valid Percent	Cumulative Percent
Valid 0	1	5,9	5,9	5,9
1	16	94,1	94,1	100,0
Total	17	100,0	100,0	

accl6

	Frequency	Percent	Valid Percent	Cumulative Percent
Valid 1	17	100,0	100,0	100,0

accl7

	Frequency	Percent	Valid Percent	Cumulative Percent
Valid 1	17	100,0	100,0	100,0

accl8

	Frequency	Percent	Valid Percent	Cumulative Percent
Valid 1	17	100,0	100,0	100,0

accl9

	Frequency	Percent	Valid Percent	Cumulative Percent
Valid 1	17	100,0	100,0	100,0

accl10

	Frequency	Percent	Valid Percent	Cumulative Percent
Valid 1	17	100,0	100,0	100,0

accl11

	Frequency	Percent	Valid Percent	Cumulative Percent
Valid 1	17	100,0	100,0	100,0

accl12

	Frequency	Percent	Valid Percent	Cumulative Percent
Valid 1	17	100,0	100,0	100,0

accl13

	Frequency	Percent	Valid Percent	Cumulative Percent
Valid 1	17	100,0	100,0	100,0

accl14

	Frequency	Percent	Valid Percent	Cumulative Percent
Valid 1	17	100,0	100,0	100,0

accl15

	Frequency	Percent	Valid Percent	Cumulative Percent
Valid 0	1	5,9	5,9	5,9
1	16	94,1	94,1	100,0
Total	17	100,0	100,0	

accl16

	Frequency	Percent	Valid Percent	Cumulative Percent
Valid 0	1	5,9	5,9	5,9
1	16	94,1	94,1	100,0
Total	17	100,0	100,0	

accl17

		Frequency	Percent	Valid Percent	Cumulative Percent
Valid	0	1	5,9	5,9	5,9
	1	16	94,1	94,1	100,0
	Total	17	100,0	100,0	

accl18

		Frequency	Percent	Valid Percent	Cumulative Percent
Valid	0	1	5,9	5,9	5,9
	1	16	94,1	94,1	100,0
	Total	17	100,0	100,0	

accl19

		Frequency	Percent	Valid Percent	Cumulative Percent
Valid	0	6	35,3	35,3	35,3
	1	11	64,7	64,7	100,0
	Total	17	100,0	100,0	

accl20

		Frequency	Percent	Valid Percent	Cumulative Percent
Valid	0	10	58,8	58,8	58,8
	1	7	41,2	41,2	100,0
	Total	17	100,0	100,0	

accl21

		Frequency	Percent	Valid Percent	Cumulative Percent
Valid	0	10	58,8	58,8	58,8
	1	7	41,2	41,2	100,0
	Total	17	100,0	100,0	

accl22

		Frequency	Percent	Valid Percent	Cumulative Percent
Valid	0	5	29,4	29,4	29,4
	1	12	70,6	70,6	100,0
	Total	17	100,0	100,0	

accl23

		Frequency	Percent	Valid Percent	Cumulative Percent
Valid	0	5	29,4	29,4	29,4
	1	12	70,6	70,6	100,0
	Total	17	100,0	100,0	

accl24

		Frequency	Percent	Valid Percent	Cumulative Percent
Valid	0	5	29,4	29,4	29,4
	1	12	70,6	70,6	100,0
	Total	17	100,0	100,0	

accl25

		Frequency	Percent	Valid Percent	Cumulative Percent
Valid	0	1	5,9	5,9	5,9
	1	16	94,1	94,1	100,0
	Total	17	100,0	100,0	

accl26

		Frequency	Percent	Valid Percent	Cumulative Percent
Valid	0	7	41,2	41,2	41,2
	1	10	58,8	58,8	100,0
	Total	17	100,0	100,0	

acc127

	Frequency	Percent	Valid Percent	Cumulative Percent
Valid 0	8	47,1	47,1	47,1
1	9	52,9	52,9	100,0
Total	17	100,0	100,0	

acc128

	Frequency	Percent	Valid Percent	Cumulative Percent
Valid 0	9	52,9	52,9	52,9
1	8	47,1	47,1	100,0
Total	17	100,0	100,0	

accm11

	Frequency	Percent	Valid Percent	Cumulative Percent
Valid 0	3	17,6	17,6	17,6
2	14	82,4	82,4	100,0
Total	17	100,0	100,0	

accm12

	Frequency	Percent	Valid Percent	Cumulative Percent
Valid 0	2	11,8	11,8	11,8
1	11	64,7	64,7	76,5
2	4	23,5	23,5	100,0
Total	17	100,0	100,0	

accm13

	Frequency	Percent	Valid Percent	Cumulative Percent
Valid 0	6	35,3	35,3	35,3
1	11	64,7	64,7	100,0
Total	17	100,0	100,0	

accml4

		Frequency	Percent	Valid Percent	Cumulative Percent
Valid	0	3	17,6	17,6	17,6
	1	5	29,4	29,4	47,1
	2	9	52,9	52,9	100,0
	Total	17	100,0	100,0	

accml5

		Frequency	Percent	Valid Percent	Cumulative Percent
Valid	0	6	35,3	35,3	35,3
	1	7	41,2	41,2	76,5
	2	4	23,5	23,5	100,0
	Total	17	100,0	100,0	

accml6

		Frequency	Percent	Valid Percent	Cumulative Percent
Valid	0	5	29,4	29,4	29,4
	1	3	17,6	17,6	47,1
	2	9	52,9	52,9	100,0
	Total	17	100,0	100,0	

accml7

		Frequency	Percent	Valid Percent	Cumulative Percent
Valid	0	3	17,6	17,6	17,6
	1	7	41,2	41,2	58,8
	2	7	41,2	41,2	100,0
	Total	17	100,0	100,0	

accml8

		Frequency	Percent	Valid Percent	Cumulative Percent
Valid	0	2	11,8	11,8	11,8
	1	6	35,3	35,3	47,1
	2	9	52,9	52,9	100,0
	Total	17	100,0	100,0	

accml9

		Frequency	Percent	Valid Percent	Cumulative Percent
Valid	0	3	17,6	17,6	17,6
	1	2	11,8	11,8	29,4
	2	12	70,6	70,6	100,0
	Total	17	100,0	100,0	

accml10

		Frequency	Percent	Valid Percent	Cumulative Percent
Valid	0	11	64,7	64,7	64,7
	1	3	17,6	17,6	82,4
	2	3	17,6	17,6	100,0
	Total	17	100,0	100,0	

accml11

		Frequency	Percent	Valid Percent	Cumulative Percent
Valid	0	8	47,1	47,1	47,1
	1	1	5,9	5,9	52,9
	2	8	47,1	47,1	100,0
	Total	17	100,0	100,0	

accml12

		Frequency	Percent	Valid Percent	Cumulative Percent
Valid	0	7	41,2	41,2	41,2
	1	3	17,6	17,6	58,8
	2	7	41,2	41,2	100,0
	Total	17	100,0	100,0	

accml13

	Frequency	Percent	Valid Percent	Cumulative Percent
Valid 0	9	52,9	52,9	52,9
1	2	11,8	11,8	64,7
2	6	35,3	35,3	100,0
Total	17	100,0	100,0	

amb1

	Frequency	Percent	Valid Percent	Cumulative Percent
Valid 1	17	100,0	100,0	100,0

amb2

	Frequency	Percent	Valid Percent	Cumulative Percent
Valid 0	2	11,8	11,8	11,8
1	15	88,2	88,2	100,0
Total	17	100,0	100,0	

amb3

	Frequency	Percent	Valid Percent	Cumulative Percent
Valid 1	17	100,0	100,0	100,0

amb4

	Frequency	Percent	Valid Percent	Cumulative Percent
Valid 1	17	100,0	100,0	100,0

amb5

	Frequency	Percent	Valid Percent	Cumulative Percent
Valid 0	2	11,8	11,8	11,8
1	15	88,2	88,2	100,0
Total	17	100,0	100,0	

amb16

		Frequency	Percent	Valid Percent	Cumulative Percent
Valid	0	1	5,9	5,9	5,9
	1	16	94,1	94,1	100,0
	Total	17	100,0	100,0	

amb17

		Frequency	Percent	Valid Percent	Cumulative Percent
Valid	1	17	100,0	100,0	100,0

ambm1

		Frequency	Percent	Valid Percent	Cumulative Percent
Valid	0	1	5,9	5,9	5,9
	2	16	94,1	94,1	100,0
	Total	17	100,0	100,0	

ambm2

		Frequency	Percent	Valid Percent	Cumulative Percent
Valid	0	2	11,8	11,8	11,8
	1	4	23,5	23,5	35,3
	2	11	64,7	64,7	100,0
	Total	17	100,0	100,0	

ambm3

		Frequency	Percent	Valid Percent	Cumulative Percent
Valid	1	3	17,6	17,6	17,6
	2	14	82,4	82,4	100,0
	Total	17	100,0	100,0	

ambml4

		Frequency	Percent	Valid Percent	Cumulative Percent
Valid	0	5	29,4	29,4	29,4
	1	4	23,5	23,5	52,9
	2	8	47,1	47,1	100,0
	Total	17	100,0	100,0	

ambml5

		Frequency	Percent	Valid Percent	Cumulative Percent
Valid	0	7	41,2	41,2	41,2
	1	7	41,2	41,2	82,4
	2	3	17,6	17,6	100,0
	Total	17	100,0	100,0	

ambml6

		Frequency	Percent	Valid Percent	Cumulative Percent
Valid	0	8	47,1	47,1	47,1
	1	5	29,4	29,4	76,5
	2	4	23,5	23,5	100,0
	Total	17	100,0	100,0	

ambml7

		Frequency	Percent	Valid Percent	Cumulative Percent
Valid	0	7	41,2	41,2	41,2
	1	6	35,3	35,3	76,5
	2	4	23,5	23,5	100,0
	Total	17	100,0	100,0	

funl1

		Frequency	Percent	Valid Percent	Cumulative Percent
Valid	1	17	100,0	100,0	100,0

funl2

	Frequency	Percent	Valid Percent	Cumulative Percent
Valid 0	1	5,9	5,9	5,9
1	16	94,1	94,1	100,0
Total	17	100,0	100,0	

funl3

	Frequency	Percent	Valid Percent	Cumulative Percent
Valid 0	1	5,9	5,9	5,9
1	16	94,1	94,1	100,0
Total	17	100,0	100,0	

funl4

	Frequency	Percent	Valid Percent	Cumulative Percent
Valid 1	17	100,0	100,0	100,0

funl5

	Frequency	Percent	Valid Percent	Cumulative Percent
Valid 1	17	100,0	100,0	100,0

funl6

	Frequency	Percent	Valid Percent	Cumulative Percent
Valid 1	17	100,0	100,0	100,0

funml1

	Frequency	Percent	Valid Percent	Cumulative Percent
Valid 0	3	17,6	17,6	17,6
1	6	35,3	35,3	52,9
2	8	47,1	47,1	100,0
Total	17	100,0	100,0	

funml2

		Frequency	Percent	Valid Percent	Cumulative Percent
Valid	0	8	47,1	47,1	47,1
	1	3	17,6	17,6	64,7
	2	6	35,3	35,3	100,0
	Total	17	100,0	100,0	

funml3

		Frequency	Percent	Valid Percent	Cumulative Percent
Valid	0	5	29,4	29,4	29,4
	1	5	29,4	29,4	58,8
	2	7	41,2	41,2	100,0
	Total	17	100,0	100,0	

funml4

		Frequency	Percent	Valid Percent	Cumulative Percent
Valid	0	11	64,7	64,7	64,7
	1	3	17,6	17,6	82,4
	2	3	17,6	17,6	100,0
	Total	17	100,0	100,0	

funml5

		Frequency	Percent	Valid Percent	Cumulative Percent
Valid	0	7	41,2	41,2	41,2
	1	4	23,5	23,5	64,7
	2	6	35,3	35,3	100,0
	Total	17	100,0	100,0	

funml6

		Frequency	Percent	Valid Percent	Cumulative Percent
Valid	0	8	47,1	47,1	47,1
	1	6	35,3	35,3	82,4
	2	3	17,6	17,6	100,0
	Total	17	100,0	100,0	

funml7

		Frequency	Percent	Valid Percent	Cumulative Percent
Valid	0	1	5,9	5,9	5,9
	1	13	76,5	76,5	82,4
	2	3	17,6	17,6	100,0
	Total	17	100,0	100,0	

funml8

		Frequency	Percent	Valid Percent	Cumulative Percent
Valid	0	7	41,2	41,2	41,2
	1	8	47,1	47,1	88,2
	2	2	11,8	11,8	100,0
	Total	17	100,0	100,0	

funml9

		Frequency	Percent	Valid Percent	Cumulative Percent
Valid	0	2	11,8	11,8	11,8
	1	10	58,8	58,8	70,6
	2	5	29,4	29,4	100,0
	Total	17	100,0	100,0	

funml10

		Frequency	Percent	Valid Percent	Cumulative Percent
Valid	0	4	23,5	23,5	23,5
	1	9	52,9	52,9	76,5
	2	4	23,5	23,5	100,0
	Total	17	100,0	100,0	

funml11

		Frequency	Percent	Valid Percent	Cumulative Percent
Valid	0	4	23,5	23,5	23,5
	1	9	52,9	52,9	76,5
	2	4	23,5	23,5	100,0
	Total	17	100,0	100,0	

funml12

		Frequency	Percent	Valid Percent	Cumulative Percent
Valid	0	2	11,8	11,8	11,8
	1	11	64,7	64,7	76,5
	2	4	23,5	23,5	100,0
	Total	17	100,0	100,0	

tot_0l_synonymy

		Frequency	Percent	Valid Percent	Cumulative Percent
Valid	0	4	23,5	23,5	23,5
	1	10	58,8	58,8	82,4
	2	3	17,6	17,6	100,0
	Total	17	100,0	100,0	

tot_1l_synonymy

		Frequency	Percent	Valid Percent	Cumulative Percent
Valid	3	3	17,6	17,6	17,6
	4	10	58,8	58,8	76,5
	5	4	23,5	23,5	100,0
	Total	17	100,0	100,0	

tot_0ml_synonymy

		Frequency	Percent	Valid Percent	Cumulative Percent
Valid	0	4	23,5	23,5	23,5
	1	7	41,2	41,2	64,7
	2	3	17,6	17,6	82,4
	4	1	5,9	5,9	88,2
	5	2	11,8	11,8	100,0
	Total	17	100,0	100,0	

tot_1ml_synonymy

		Frequency	Percent	Valid Percent	Cumulative Percent
Valid	0	4	23,5	23,5	23,5
	1	2	11,8	11,8	35,3
	2	3	17,6	17,6	52,9
	3	6	35,3	35,3	88,2
	4	1	5,9	5,9	94,1
	5	1	5,9	5,9	100,0
	Total	17	100,0	100,0	

tot_2ml_synonymy

		Frequency	Percent	Valid Percent	Cumulative Percent
Valid	0	8	47,1	47,1	47,1
	1	1	5,9	5,9	52,9
	2	5	29,4	29,4	82,4
	3	1	5,9	5,9	88,2
	4	1	5,9	5,9	94,1
	5	1	5,9	5,9	100,0
	Total	17	100,0	100,0	

tot_0l_acceptability

		Frequency	Percent	Valid Percent	Cumulative Percent
Valid	0	3	17,6	17,6	17,6
	3	4	23,5	23,5	41,2
	4	2	11,8	11,8	52,9
	5	1	5,9	5,9	58,8
	6	3	17,6	17,6	76,5
	7	2	11,8	11,8	88,2
	8	2	11,8	11,8	100,0
	Total	17	100,0	100,0	

tot_1l_acceptability

		Frequency	Percent	Valid Percent	Cumulative Percent
Valid	20	2	11,8	11,8	11,8
	21	2	11,8	11,8	23,5
	22	3	17,6	17,6	41,2
	23	1	5,9	5,9	47,1
	24	2	11,8	11,8	58,8
	25	4	23,5	23,5	82,4
	28	3	17,6	17,6	100,0
	Total	17	100,0	100,0	

tot_0ml_acceptability

		Frequency	Percent	Valid Percent	Cumulative Percent
Valid	0	1	5,9	5,9	5,9
	1	2	11,8	11,8	17,6
	2	4	23,5	23,5	41,2
	3	1	5,9	5,9	47,1
	4	2	11,8	11,8	58,8
	5	3	17,6	17,6	76,5
	6	1	5,9	5,9	82,4
	8	2	11,8	11,8	94,1
	10	1	5,9	5,9	100,0
	Total	17	100,0	100,0	

tot_1ml_acceptability

		Frequency	Percent	Valid Percent	Cumulative Percent
Valid	1	1	5,9	5,9	5,9
	2	2	11,8	11,8	17,6
	3	5	29,4	29,4	47,1
	4	4	23,5	23,5	70,6
	5	5	29,4	29,4	100,0
	Total	17	100,0	100,0	

tot_2ml_acceptability

		Frequency	Percent	Valid Percent	Cumulative Percent
Valid	1	1	5,9	5,9	5,9
	2	2	11,8	11,8	17,6
	3	1	5,9	5,9	23,5
	4	1	5,9	5,9	29,4
	5	3	17,6	17,6	47,1
	6	4	23,5	23,5	70,6
	7	1	5,9	5,9	76,5
	8	2	11,8	11,8	88,2
	9	2	11,8	11,8	100,0
	Total	17	100,0	100,0	

tot_0l_ambiguity

		Frequency	Percent	Valid Percent	Cumulative Percent
Valid	0	14	82,4	82,4	82,4
	1	1	5,9	5,9	88,2
	2	2	11,8	11,8	100,0
	Total	17	100,0	100,0	

tot_1l_ambiguity

		Frequency	Percent	Valid Percent	Cumulative Percent
Valid	5	2	11,8	11,8	11,8
	6	1	5,9	5,9	17,6
	7	14	82,4	82,4	100,0
	Total	17	100,0	100,0	

tot 0ml_ambiguity

		Frequency	Percent	Valid Percent	Cumulative Percent
Valid	0	6	35,3	35,3	35,3
	1	3	17,6	17,6	52,9
	2	2	11,8	11,8	64,7
	3	3	17,6	17,6	82,4
	4	2	11,8	11,8	94,1
	6	1	5,9	5,9	100,0
	Total	17	100,0	100,0	

tot 1ml_ambiguity

		Frequency	Percent	Valid Percent	Cumulative Percent
Valid	0	4	23,5	23,5	23,5
	1	5	29,4	29,4	52,9
	2	3	17,6	17,6	70,6
	3	2	11,8	11,8	82,4
	4	3	17,6	17,6	100,0
	Total	17	100,0	100,0	

tot 2ml_ambiguity

		Frequency	Percent	Valid Percent	Cumulative Percent
Valid	1	1	5,9	5,9	5,9
	2	3	17,6	17,6	23,5
	3	5	29,4	29,4	52,9
	4	3	17,6	17,6	70,6
	5	4	23,5	23,5	94,1
	6	1	5,9	5,9	100,0
	Total	17	100,0	100,0	

tot 0l_function

		Frequency	Percent	Valid Percent	Cumulative Percent
Valid	0	15	88,2	88,2	88,2
	1	2	11,8	11,8	100,0
	Total	17	100,0	100,0	

tot_1l_function

		Frequency	Percent	Valid Percent	Cumulative Percent
Valid	5	2	11,8	11,8	11,8
	6	15	88,2	88,2	100,0
	Total	17	100,0	100,0	

tot_0ml_function

		Frequency	Percent	Valid Percent	Cumulative Percent
Valid	0	2	11,8	11,8	11,8
	1	3	17,6	17,6	29,4
	2	1	5,9	5,9	35,3
	3	4	23,5	23,5	58,8
	4	2	11,8	11,8	70,6
	6	2	11,8	11,8	82,4
	7	1	5,9	5,9	88,2
	9	2	11,8	11,8	100,0
	Total	17	100,0	100,0	

tot_1ml_function

		Frequency	Percent	Valid Percent	Cumulative Percent
Valid	1	2	11,8	11,8	11,8
	3	4	23,5	23,5	35,3
	5	4	23,5	23,5	58,8
	6	2	11,8	11,8	70,6
	7	1	5,9	5,9	76,5
	8	2	11,8	11,8	88,2
	9	2	11,8	11,8	100,0
	Total	17	100,0	100,0	

tot_2ml_function

		Frequency	Percent	Valid Percent	Cumulative Percent
Valid	0	3	17,6	17,6	17,6
	1	2	11,8	11,8	29,4
	2	4	23,5	23,5	52,9
	3	2	11,8	11,8	64,7
	5	2	11,8	11,8	76,5
	6	2	11,8	11,8	88,2
	7	1	5,9	5,9	94,1
	10	1	5,9	5,9	100,0
	Total	17	100,0	100,0	

tot_0l

		Frequency	Percent	Valid Percent	Cumulative Percent
Valid	1	1	5,9	5,9	5,9
	2	2	11,8	11,8	17,6
	3	1	5,9	5,9	23,5
	4	3	17,6	17,6	41,2
	5	2	11,8	11,8	52,9
	6	2	11,8	11,8	64,7
	7	1	5,9	5,9	70,6
	9	3	17,6	17,6	88,2
	10	2	11,8	11,8	100,0
	Total	17	100,0	100,0	

tot_1l

		Frequency	Percent	Valid Percent	Cumulative Percent
Valid	36	2	11,8	11,8	11,8
	37	3	17,6	17,6	29,4
	39	1	5,9	5,9	35,3
	40	2	11,8	11,8	47,1
	41	2	11,8	11,8	58,8
	42	3	17,6	17,6	76,5
	43	1	5,9	5,9	82,4
	44	2	11,8	11,8	94,1
	45	1	5,9	5,9	100,0
	Total	17	100,0	100,0	

tot_0ml

		Frequency	Percent	Valid Percent	Cumulative Percent
Valid	3	1	5,9	5,9	5,9
	4	2	11,8	11,8	17,6
	5	1	5,9	5,9	23,5
	6	2	11,8	11,8	35,3
	7	1	5,9	5,9	41,2
	8	2	11,8	11,8	52,9
	11	1	5,9	5,9	58,8
	12	1	5,9	5,9	64,7
	13	1	5,9	5,9	70,6
	15	2	11,8	11,8	82,4
	17	1	5,9	5,9	88,2
	25	1	5,9	5,9	94,1
	28	1	5,9	5,9	100,0
	Total	17	100,0	100,0	

tot_1ml

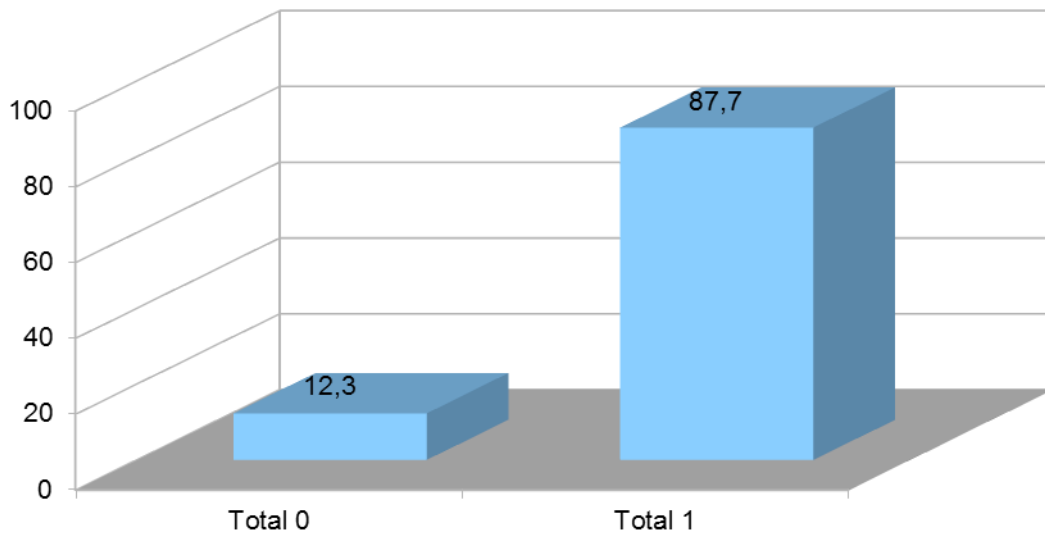
		Frequency	Percent	Valid Percent	Cumulative Percent
Valid	6	1	5,9	5,9	5,9
	8	2	11,8	11,8	17,6
	9	1	5,9	5,9	23,5
	11	2	11,8	11,8	35,3
	12	1	5,9	5,9	41,2
	13	2	11,8	11,8	52,9
	14	4	23,5	23,5	76,5
	15	1	5,9	5,9	82,4
	16	1	5,9	5,9	88,2
	17	2	11,8	11,8	100,0
	Total	17	100,0	100,0	

tot_2ml

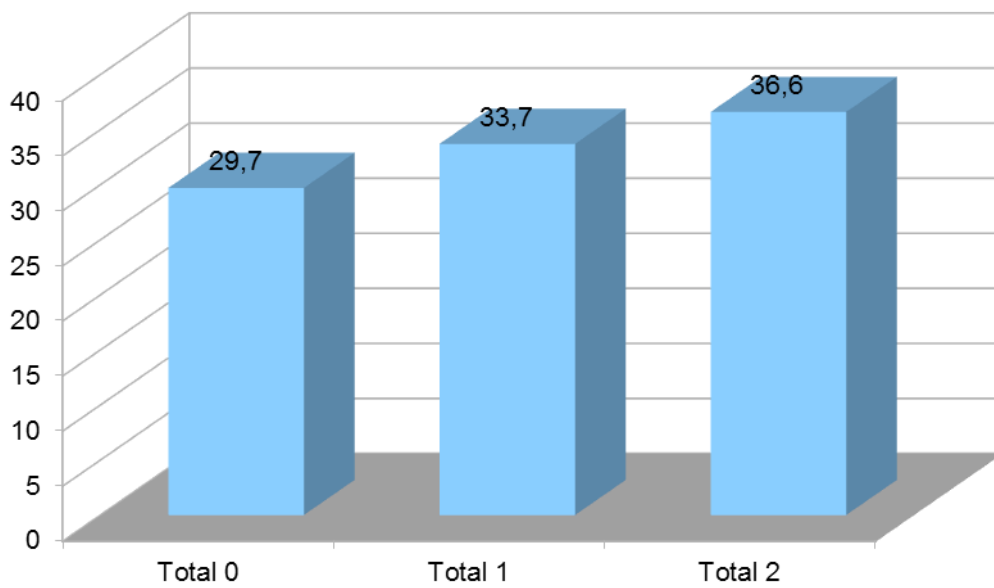
		Frequency	Percent	Valid Percent	Cumulative Percent
Valid	3	1	5,9	5,9	5,9
	4	1	5,9	5,9	11,8
	7	1	5,9	5,9	17,6
	8	1	5,9	5,9	23,5
	9	1	5,9	5,9	29,4
	11	2	11,8	11,8	41,2
	12	1	5,9	5,9	47,1
	13	1	5,9	5,9	52,9
	14	1	5,9	5,9	58,8
	17	1	5,9	5,9	64,7
	18	3	17,6	17,6	82,4
	20	1	5,9	5,9	88,2
	21	1	5,9	5,9	94,1
	26	1	5,9	5,9	100,0
	Total	17	100,0	100,0	

Levels

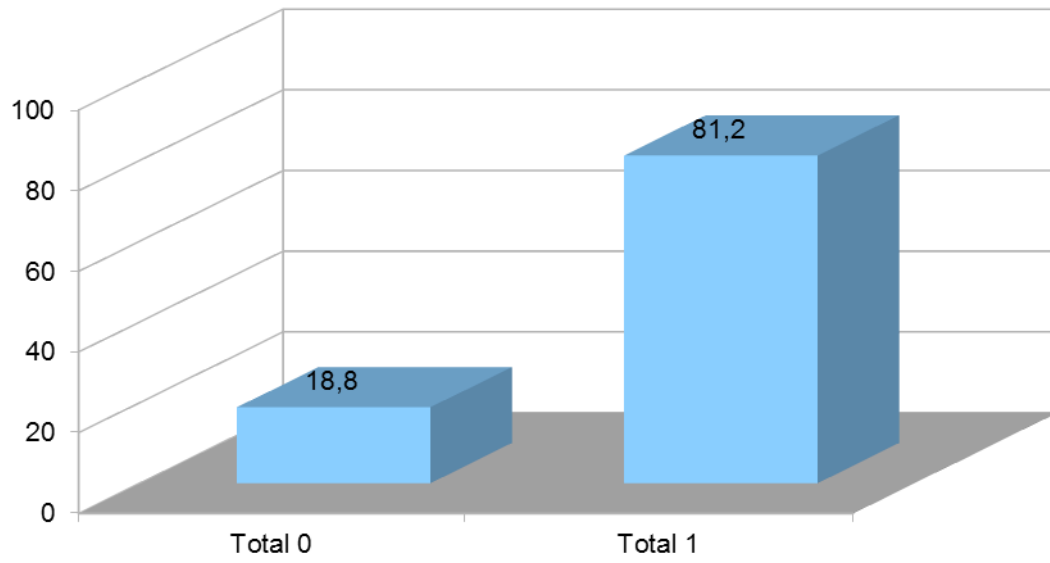
Levels L total test (%)



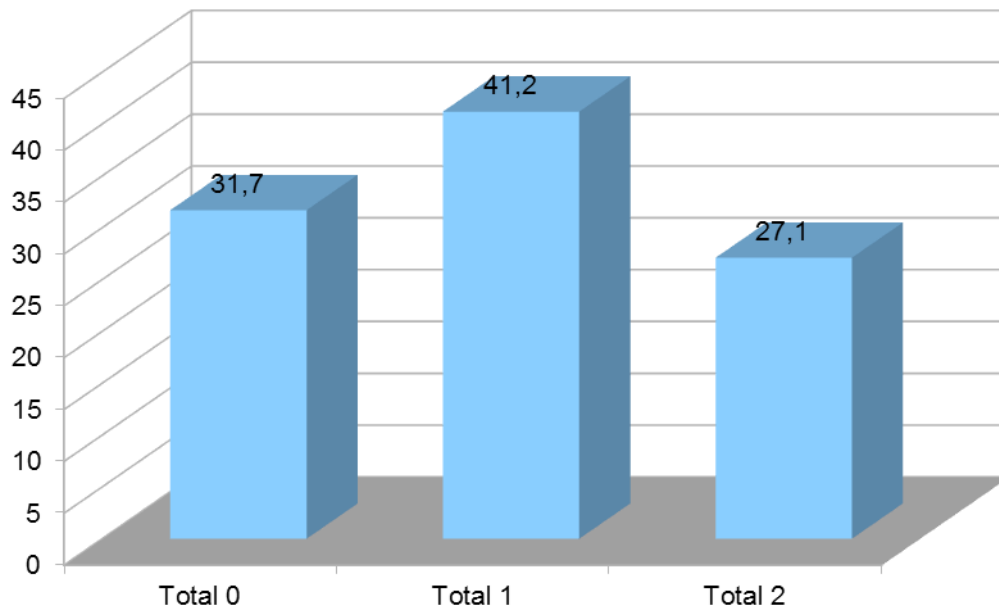
Levels ML total test (%)



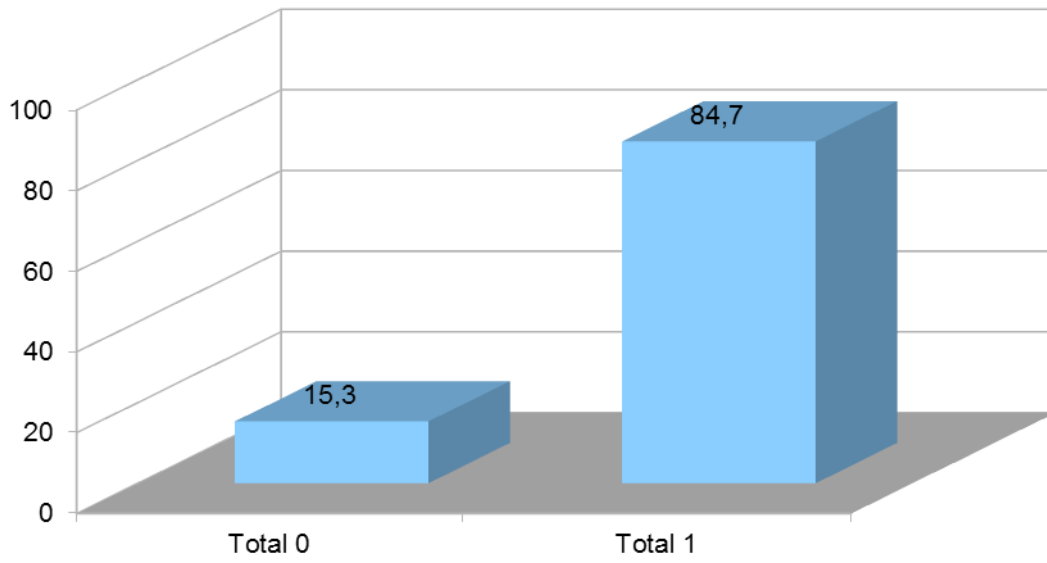
Levels L Synonymy (%)



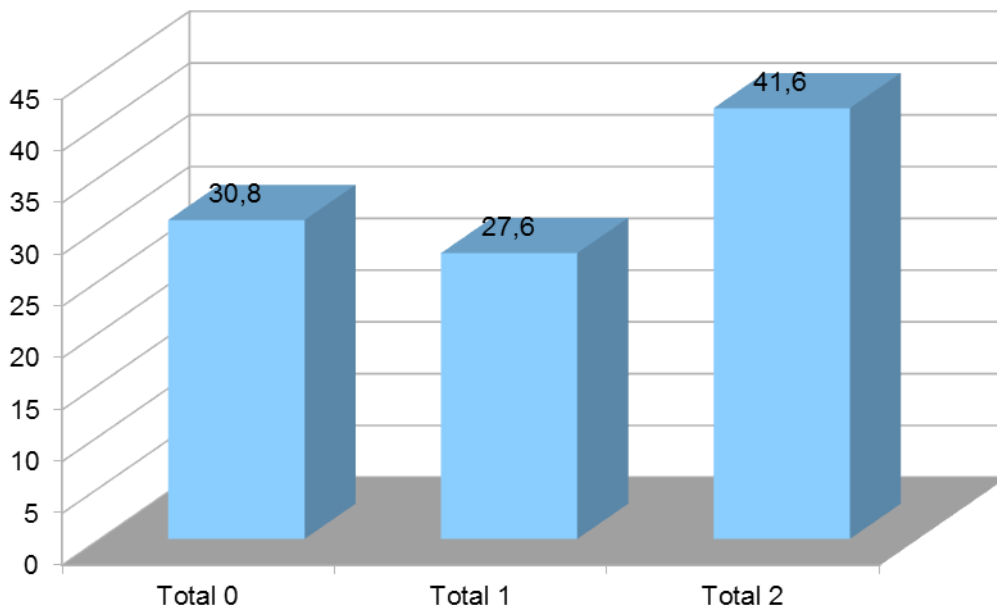
Levels ML Synonymy (%)



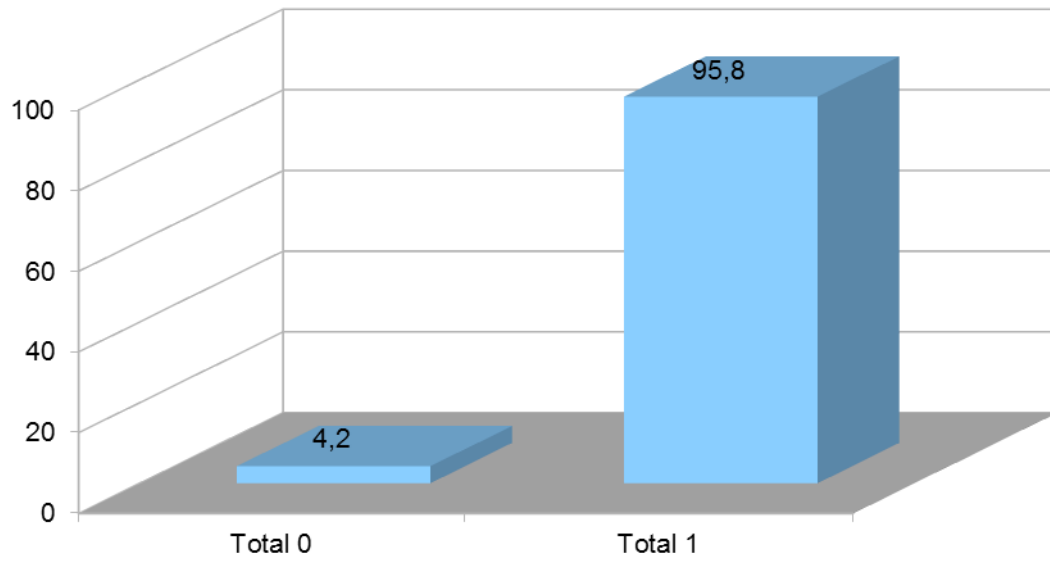
Levels L Acceptability (%)



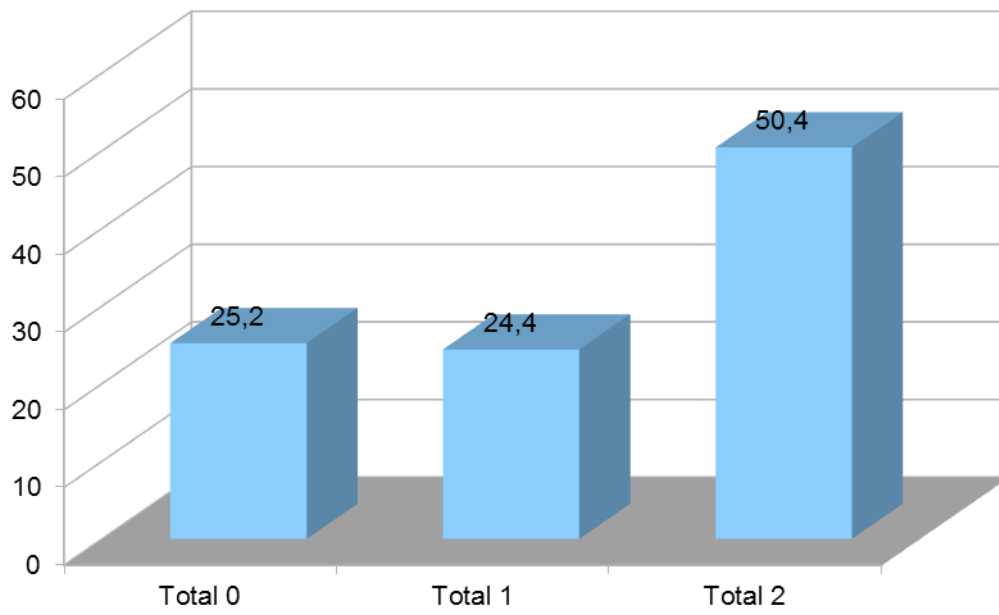
Levels ML Acceptability (%)



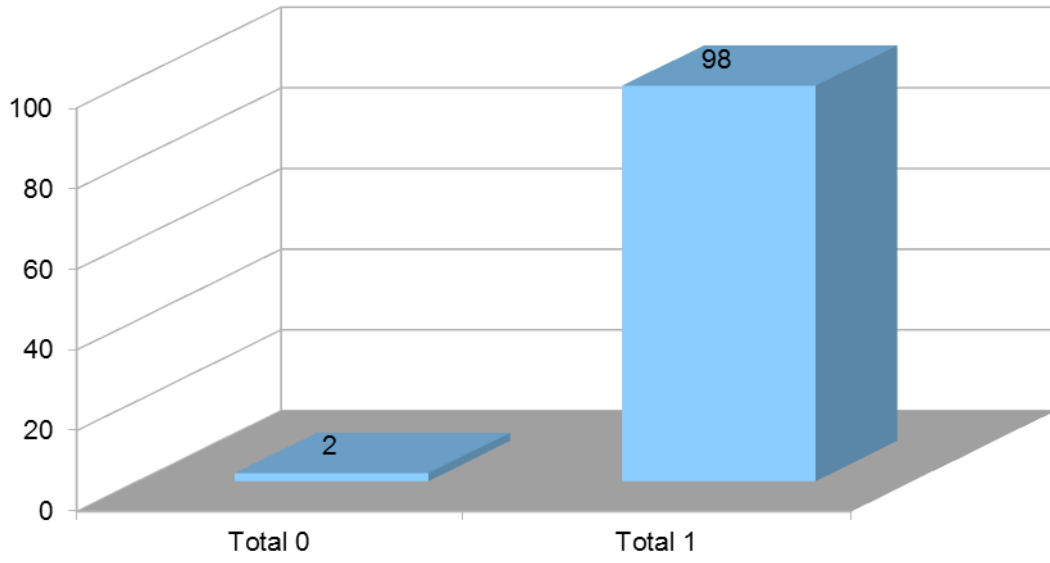
Levels L Ambiguity (%)



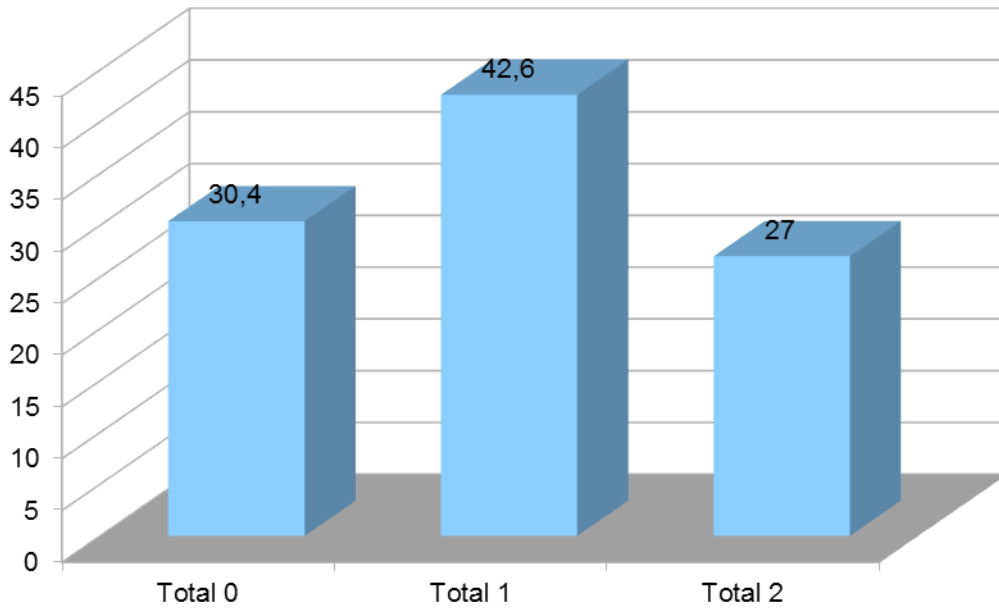
Levels ML Ambiguity (%)



Levels L Function (%)



Levels ML Function (%)



Reliability

Reliability

Scale: ALPHA

Case Processing Summary

		N	%
Cases	Valid	17	100,0
	Excluded ^a	0	,0
	Total	17	100,0

a. Listwise deletion based on all variables in the procedure.

Reliability Statistics

Cronbach's Alpha ^a	N of Items
-,742	5

a. The value is negative due to a negative average covariance among items. This violates reliability model assumptions. You may want to check item codings.

Item Statistics

	Mean	Std. Deviation	N
syn11	,82	,393	17
syn12	,94	,243	17
syn13	,82	,393	17
syn14	,53	,514	17
syn15	,94	,243	17

Reliability

Scale: ALPHA

Case Processing Summary

		N	%
Cases	Valid	17	100,0
	Excluded ^a	0	,0
	Total	17	100,0

a. Listwise deletion based on all variables in the procedure.

Reliability Statistics

Cronbach's Alpha	N of Items
,787	5

Item Statistics

	Mean	Std. Deviation	N
synml1	1,18	,883	17
synml2	1,00	,707	17
synml3	,88	,600	17
synml4	,65	,862	17
synml5	1,06	,748	17

Reliability

Scale: ALPHA

Case Processing Summary

		N	%
Cases	Valid	17	100,0
	Excluded ^a	0	,0
	Total	17	100,0

a. Listwise deletion based on all variables in the procedure.

Reliability Statistics

Cronbach's Alpha	N of Items
,647	28

Item Statistics

	Mean	Std. Deviation	N
accl1	1,00	,000	17
accl2	1,00	,000	17
accl3	1,00	,000	17
accl4	,88	,332	17
accl5	,94	,243	17
accl6	1,00	,000	17
accl7	1,00	,000	17
accl8	1,00	,000	17
accl9	1,00	,000	17
accl10	1,00	,000	17
accl11	1,00	,000	17
accl12	1,00	,000	17
accl13	1,00	,000	17
accl14	1,00	,000	17
accl15	,94	,243	17
accl16	,94	,243	17
accl17	,94	,243	17
accl18	,94	,243	17
accl19	,65	,493	17
accl20	,41	,507	17
accl21	,41	,507	17
accl22	,71	,470	17
accl23	,71	,470	17
accl24	,71	,470	17
accl25	,94	,243	17
accl26	,59	,507	17
accl27	,53	,514	17
accl28	,47	,514	17

Reliability

Scale: ALPHA

Case Processing Summary

		N	%
Cases	Valid	17	100,0
	Excluded ^a	0	,0
	Total	17	100,0

a. Listwise deletion based on all variables in the procedure.

Reliability Statistics

Cronbach's Alpha	N of Items
,734	13

Item Statistics

	Mean	Std. Deviation	N
accml1	1,65	,786	17
accml2	1,12	,600	17
accml3	,65	,493	17
accml4	1,35	,786	17
accml5	,88	,781	17
accml6	1,24	,903	17
accml7	1,24	,752	17
accml8	1,41	,712	17
accml9	1,53	,800	17
accml10	,53	,800	17
accml11	1,00	1,000	17
accml12	1,00	,935	17
accml13	,82	,951	17

Reliability

Warnings

Scale has zero variance items.

Scale: ALPHA

Case Processing Summary

		N	%
Cases	Valid	17	100,0
	Excluded ^a	0	,0
	Total	17	100,0

a. Listwise deletion based on all variables in the procedure.

Reliability Statistics

Cronbach's Alpha	N of Items
,474	7

Item Statistics

	Mean	Std. Deviation	N
amb1	1,00	,000	17
amb2	,88	,332	17
amb3	1,00	,000	17
amb4	1,00	,000	17
amb5	,88	,332	17
amb6	,94	,243	17
amb7	1,00	,000	17

Reliability

Scale: ALPHA

Case Processing Summary

		N	%
Cases	Valid	17	100,0
	Excluded ^a	0	,0
	Total	17	100,0

a. Listwise deletion based on all variables in the procedure.

Reliability Statistics

Cronbach's Alpha	N of Items

Item Statistics

	Mean	Std. Deviation	N
ambml1	1,88	,485	17
ambml2	1,53	,717	17
ambml3	1,82	,393	17
ambml4	1,18	,883	17
ambml5	,76	,752	17
ambml6	,76	,831	17
ambml7	,82	,809	17

Reliability

Warnings

Scale has zero variance items.

Scale: ALPHA

Case Processing Summary

		N	%
Cases	Valid	17	100,0
	Excluded ^a	0	,0
	Total	17	100,0

a. Listwise deletion based on all variables in the procedure.

Reliability Statistics

Cronbach's Alpha ^a	N of Items
-,080	6

a. The value is negative due to a negative average covariance among items. This violates reliability model assumptions. You may want to check item codings.

Item Statistics

	Mean	Std. Deviation	N
fun1	1,00	,000	17
fun2	,94	,243	17
fun3	,94	,243	17
fun4	1,00	,000	17
fun5	1,00	,000	17
fun6	1,00	,000	17

Reliability

Scale: ALPHA

Case Processing Summary

		N	%
Cases	Valid	17	100,0
	Excluded ^a	0	,0
	Total	17	100,0

a. Listwise deletion based on all variables in the procedure.

Reliability Statistics

Cronbach's Alpha	N of Items
,811	12

Item Statistics

	Mean	Std. Deviation	N
funml1	1,29	,772	17
funml2	,88	,928	17
funml3	1,12	,857	17
funml4	,53	,800	17
funml5	,94	,899	17
funml6	,71	,772	17
funml7	1,12	,485	17
funml8	,71	,686	17
funml9	1,18	,636	17
funml10	1,00	,707	17
funml11	1,00	,707	17
funml12	1,12	,600	17

Intercorrelations

Correlations

		Synonymy L	Synonymy ML	Acceptability L
Synonymy L	Pearson Correlation	1	,547	-,203
	Sig. (2-tailed)		,023	,434
	N	17	17	17
Synonymy ML	Pearson Correlation	,547	1	-,260
	Sig. (2-tailed)	,023		,314
	N	17	17	17
Acceptability L	Pearson Correlation	-,203	-,260	1
	Sig. (2-tailed)	,434	,314	
	N	17	17	17
Acceptability ML	Pearson Correlation	,178	,542	,143
	Sig. (2-tailed)	,493	,025	,584
	N	17	17	17
Ambiguity L	Pearson Correlation	,041	,415	,258
	Sig. (2-tailed)	,877	,098	,318
	N	17	17	17
Ambiguity ML	Pearson Correlation	,205	,646**	,080
	Sig. (2-tailed)	,430	,005	,760
	N	17	17	17
Function L	Pearson Correlation	-,252	-,031	,100
	Sig. (2-tailed)	,329	,905	,703
	N	17	17	17
Function ML	Pearson Correlation	,100	,644**	-,312
	Sig. (2-tailed)	,701	,005	,222
	N	17	17	17
Tham-2 total L	Pearson Correlation	,021	-,020	,933*
	Sig. (2-tailed)	,936	,941	,000
	N	17	17	17
Tham-2 total ML	Pearson Correlation	,270	,814**	-,104
	Sig. (2-tailed)	,295	,000	,692
	N	17	17	17
Tham-2 total score	Pearson Correlation	,265	,784**	,101
	Sig. (2-tailed)	,303	,000	,701
	N	17	17	17

*. Correlation is significant at the 0.05 level (2-tailed).

** . Correlation is significant at the 0.01 level (2-tailed).

Correlations

		Acceptability ML	Ambiguity L	Ambiguity ML	Function L
Synonymy L	Pearson Correlation	,178	,041	,205	-,252
	Sig. (2-tailed)	,493	,877	,430	,329
	N	17	17	17	17
Synonymy ML	Pearson Correlation	,542	,415	,646**	-,031
	Sig. (2-tailed)	,025	,098	,005	,905
	N	17	17	17	17
Acceptability L	Pearson Correlation	,143	,258	,080	,100

		Synonymy L	Synonymy ML	Acceptability L
Synonymy L	Pearson Correlation	1	,547	-,203
	Sig. (2-tailed)		,023	,434
	N	17	17	17
Synonymy ML	Pearson Correlation	,547	1	-,260
	Sig. (2-tailed)	,023		,314
	N	17	17	17
Acceptability L	Pearson Correlation	-,203	-,260	1
	Sig. (2-tailed)	,434	,314	
	N	17	17	17
Acceptability ML	Pearson Correlation	,178	,542	,143
	Sig. (2-tailed)	,493	,025	,584
	N	17	17	17
Ambiguity L	Pearson Correlation	,041	,415	,258
	Sig. (2-tailed)	,877	,098	,318
	N	17	17	17
Ambiguity ML	Pearson Correlation	,205	,646**	,080
	Sig. (2-tailed)	,430	,005	,760
	N	17	17	17
Function L	Pearson Correlation	-,252	-,031	,100
	Sig. (2-tailed)	,329	,905	,703
	N	17	17	17
Function ML	Pearson Correlation	,100	,644**	-,312
	Sig. (2-tailed)	,701	,005	,222
	N	17	17	17
Tham-2 total L	Pearson Correlation	,021	-,020	,933*
	Sig. (2-tailed)	,936	,941	,000
	N	17	17	17
Tham-2 total ML	Pearson Correlation	,270	,814**	-,104
	Sig. (2-tailed)	,295	,000	,692
	N	17	17	17
Tham-2 total score	Pearson Correlation	,265	,784**	,101
	Sig. (2-tailed)	,303	,000	,701
	N	17	17	17

*. Correlation is significant at the 0.05 level (2-tailed).

** . Correlation is significant at the 0.01 level (2-tailed).

Correlations

		Acceptability ML	Ambiguity L	Ambiguity ML	Function L
Synonymy L	Pearson Correlation	,178	,041	,205	-,252
	Sig. (2-tailed)	,493	,877	,430	,329
	N	17	17	17	17
Synonymy ML	Pearson Correlation	,542	,415	,646**	-,031
	Sig. (2-tailed)	,025	,098	,005	,905
	N	17	17	17	17
Acceptability L	Pearson Correlation	,143	,258	,080	,100

		Synonymy L	Synonymy ML	Acceptability L
Synonymy L	Pearson Correlation	1	,547	-,203
	Sig. (2-tailed)		,023	,434
	N	17	17	17
Synonymy ML	Pearson Correlation	,547	1	-,260
	Sig. (2-tailed)	,023		,314
	N	17	17	17
Acceptability L	Pearson Correlation	-,203	-,260	1
	Sig. (2-tailed)	,434	,314	
	N	17	17	17
Acceptability ML	Pearson Correlation	,178	,542	,143
	Sig. (2-tailed)	,493	,025	,584
	N	17	17	17
Ambiguity L	Pearson Correlation	,041	,415	,258
	Sig. (2-tailed)	,877	,098	,318
	N	17	17	17
Ambiguity ML	Pearson Correlation	,205	,646**	,080
	Sig. (2-tailed)	,430	,005	,760
	N	17	17	17
Function L	Pearson Correlation	-,252	-,031	,100
	Sig. (2-tailed)	,329	,905	,703
	N	17	17	17
Function ML	Pearson Correlation	,100	,644**	-,312
	Sig. (2-tailed)	,701	,005	,222
	N	17	17	17
Tham-2 total L	Pearson Correlation	,021	-,020	,933*
	Sig. (2-tailed)	,936	,941	,000
	N	17	17	17
Tham-2 total ML	Pearson Correlation	,270	,814**	-,104
	Sig. (2-tailed)	,295	,000	,692
	N	17	17	17
Tham-2 total score	Pearson Correlation	,265	,784**	,101
	Sig. (2-tailed)	,303	,000	,701
	N	17	17	17

*. Correlation is significant at the 0.05 level (2-tailed).

** . Correlation is significant at the 0.01 level (2-tailed).

Correlations

		Acceptability ML	Ambiguity L	Ambiguity ML	Function L
Synonymy L	Pearson Correlation	,178	,041	,205	-,252
	Sig. (2-tailed)	,493	,877	,430	,329
	N	17	17	17	17
Synonymy ML	Pearson Correlation	,542	,415	,646**	-,031
	Sig. (2-tailed)	,025	,098	,005	,905
	N	17	17	17	17
Acceptability L	Pearson Correlation	,143	,258	,080	,100

Factor structure

Factor Analysis

Communalities

	Initial	Extraction
Synonymy L	1,000	,374
Synonymy ML	1,000	,817
Acceptability L	1,000	,437
Acceptability ML	1,000	,536
Ambiguity L	1,000	,767
Ambiguity ML	1,000	,859
Function L	1,000	,493
Function ML	1,000	,638

Extraction Method: Principal Component Analysis.

Total Variance Explained

Component	Initial Eigenvalues		
	Total	% of Variance	Cumulative %
1	3,181	39,764	
2	1,740	21,746	
3	1,079	13,491	75,001
4	,934	11,676	86,677
5	,518	6,477	93,154
6	,276	3,450	96,604
7	,168	2,096	98,700
8	,104	1,300	100,000

Extraction Method: Principal Component Analysis.

Total Variance Explained

Component	Initial Eigenvalues	Extraction Sums of Squared Loadings		
	Cumulative %	Total	% of Variance	Cumulative %
1	39,764	3,181	39,764	39,764
2	61,510	1,740	21,746	61,510

Extraction Method: Principal Component Analysis.

Total Variance Explained

Component	Rotation Sums of Squared Loadings		
	Total	% of Variance	Cumulative %
1	3,172	39,653	39,653
2	1,749	21,857	61,510

Extraction Method: Principal Component Analysis.

Component Matrix^a

	Component	
	1	2
Synonymy ML	,892	-,144
Ambiguity ML	,880	,290
Function ML	,753	-,265
Acceptability ML	,731	,036
Synonymy L	,433	-,432
Function L	-,096	,696
Ambiguity L	,546	,685
Acceptability L	-,114	,651

Extraction Method: Principal Component Analysis.

a. 2 components extracted.

Rotated Component Matrix^a

	Component	
	1	2
Ambiguity ML	,900	,220
Synonymy ML	,878	-,214
Acceptability ML	,732	-,022
Function ML	,730	-,323
Function L	-,041	,701
Acceptability L	-,063	,658
Ambiguity L	,598	,639
Synonymy L	,398	-,464

Extraction Method: Principal Component Analysis.

Rotation Method: Varimax with Kaiser

Normalization.

a. Rotation converged in 3 iterations.

Component Transformation

Matrix

Component	1	2
1	,997	-,079
2	,079	,997

Extraction Method: Principal Component Analysis.

Rotation Method: Varimax with Kaiser Normalization.